

PER MONTH

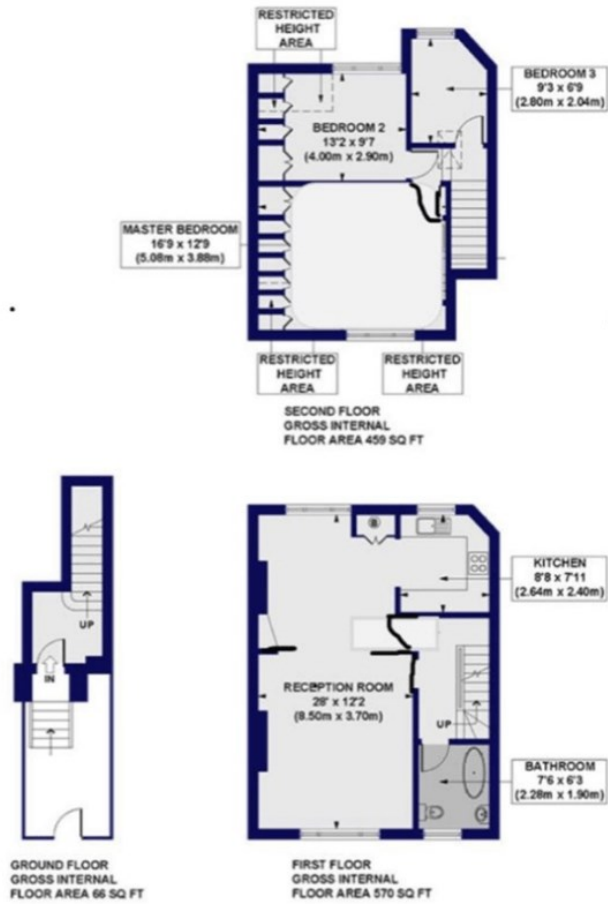
**£2,450 Per Month**  
**Cavendish Road**

Haringey, N4 1RT

EPC RATING: COUNCIL TAX BAND:

### Cavendish Road, N4

rox. Gross Internal Floor Area 1095 sq. ft / 101.74 sq. m (Including Restricted Height Area)  
 rox. Gross Internal Floor Area 1004 sq. ft / 93.24 sq. m (Excluding Restricted Height Area)



Energy Efficiency Rating		Current	Potential
Very energy efficient - lower running costs			
(92 plus)	<b>A</b>		
(81-91)	<b>B</b>		
(69-80)	<b>C</b>		
(55-68)	<b>D</b>		
(39-54)	<b>E</b>		
(21-38)	<b>F</b>		
(1-20)	<b>G</b>		
Not energy efficient - higher running costs			
<b>England &amp; Wales</b>		EU Directive 2002/91/EC	



Agents Note: Whilst every care has been taken to prepare these particulars, they are for guidance purposes only. All measurements are approximate and are for general guidance purposes only and whilst every care has been taken to ensure their accuracy, they should not be relied upon and potential buyers/tenants are advised to recheck the measurements

**Paul Simon**  
Estate agents

**OFFICE ADDRESS**  
 786-788 Green Lanes  
 London  
 N21 3RE

**OFFICE DETAILS**  
 0208 800 1155  
 management@paul-simon.co.uk